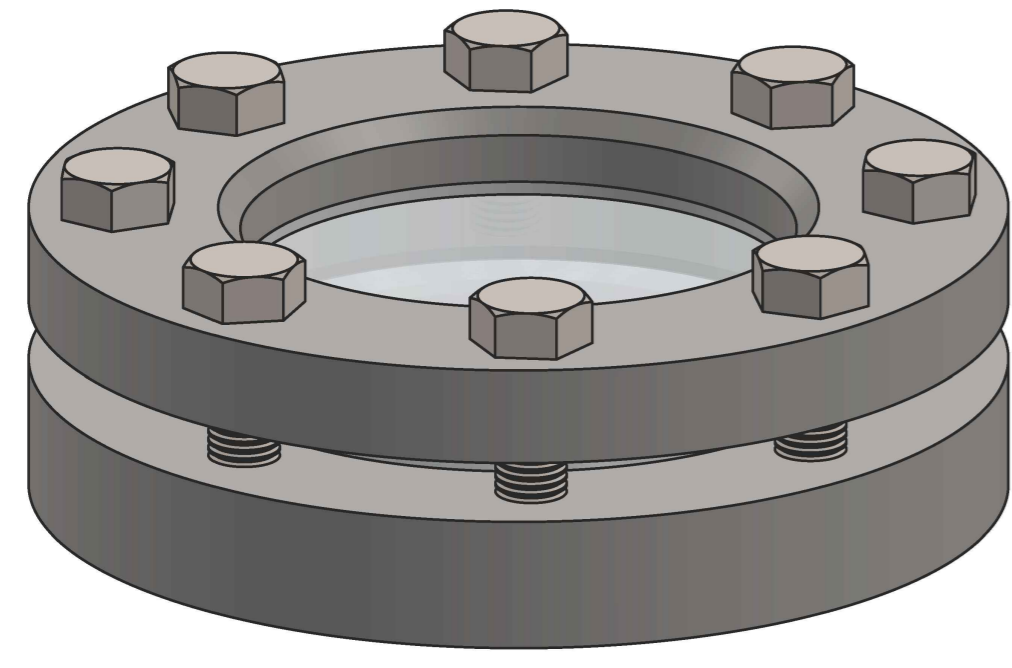
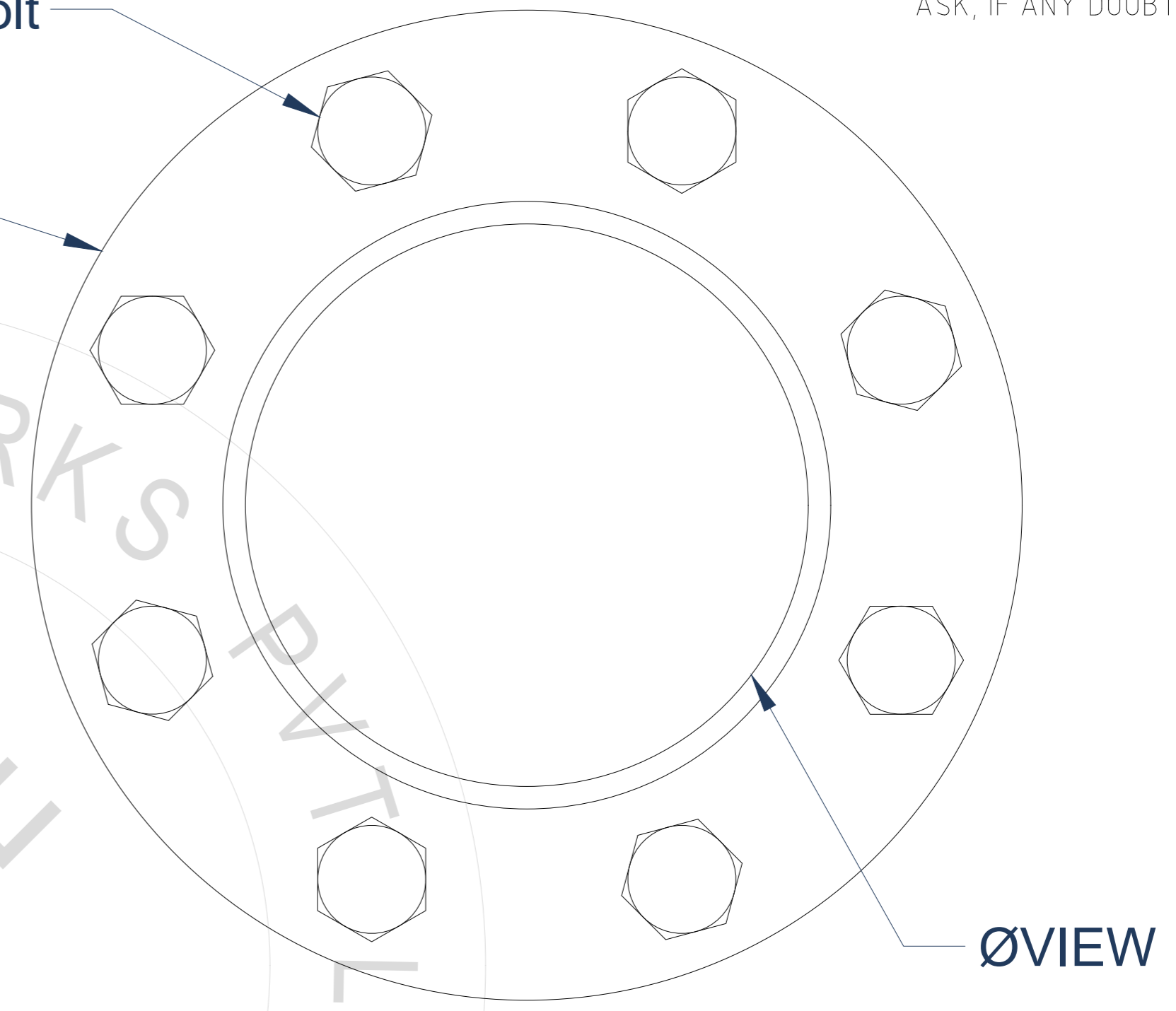


DO NOT SCALE DRAWING
ASK, IF ANY DOUBT



No. Of Hex Bolt

OD

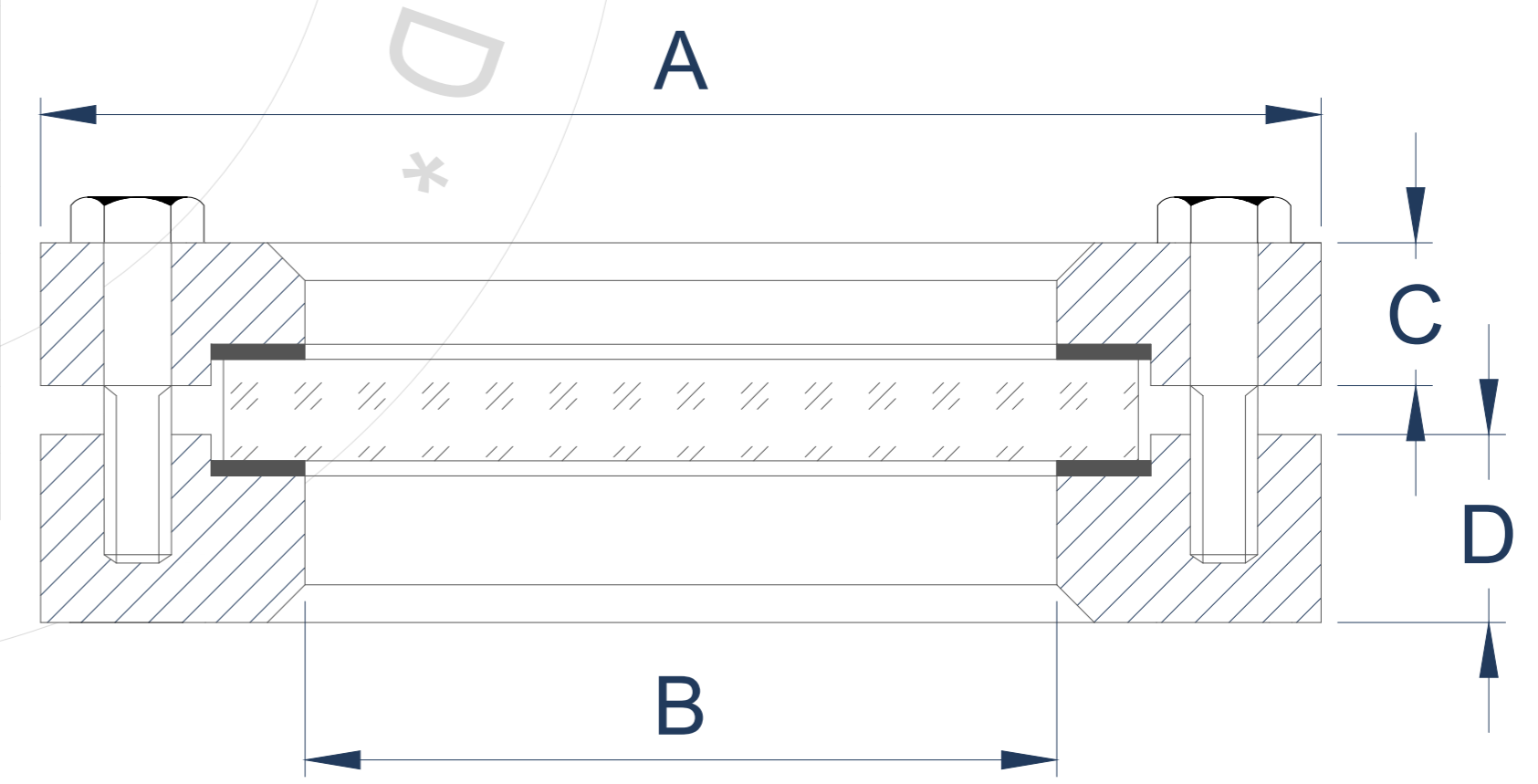


SPECIFICATIONS:

- OPT. TEMPERATURE: 200°C
- HYDRO TEST: 15 KG/CM²

Tank Mounted Weld On Sight Glass

SIZE	OD (A) _(±2)	VISIBLE VIEW (B) _(±1)	FLANGE THK 1 (C) _(±1)	FLANGE THK 2 (D) _(±1)	NO. OF HEX BOLTS & SIZE	GLASS OD x THK.
50DN (2")	165	80	16	30	4 x M16	100 x 15
80DN (3")	200	100	20	30	8 x M16	125 x 20
100DN (4")	220	125	18	30	8 x M16	150 x 20
125DN (5")	250	150	18	30	8 x M16	175 x 20
150DN (6")	285	175	18	36	8 x M20	200 x 25
200DN (8")	340	225	20	36	8 x M20	250 x 30



No.	Part Name	Material
1	Weld Flange	SS304
2	Cover Flange	SS304
3	Gasket	PTFE
4	Glass	Toughened Borosilicate
5	Fasteners	SS304

An ISO 9001:2015 Certified Company

NG NOBLE GLASS WORKS PVT. LTD.
E-52/1, SARDAR INDUSTRIAL ESTATE, AJWA ROAD, BARODA-390 019. [GUJARAT] INDIA.
Contact: (+91) 9904406603, Email: info@nobleglass.in
Website: www.nobleglass.in

REV.	DESCRIPTION	APPRD.	DATE	DRN. BY:	PRAJJVAL	TO,
				APPRD. BY:	PRATIK	
ALL DIMENSION AND LEVELS ARE IN mm UNLESS OTHERWISE STATED.				SCALE : NTS		TITLE : Tank Mounted Weld On Sight Glass
THIS DRAWING IS THE PROPERTY OF NGWPL AND MUST NOT BE COPIED OR LENT WITHOUT THEIR PERMISSION IN DRAWING				DRG. NO. : NGWPL/DWG309/23-24		REV.